

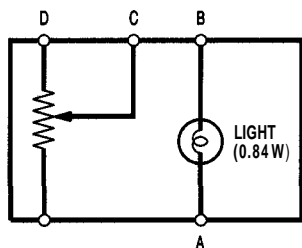
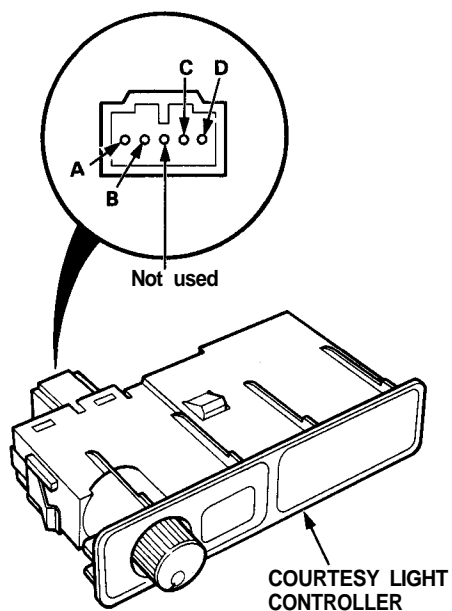
# Entry Light Control System

## Controller Test (LS model)

1. Remove the courtesy light controller from the dashboard lower cover.
2. Measure resistance between the C and D terminals while rotating the adjusting dial.

Resistance should vary from 0 to 24,000 ohms as the dial is rotated.

NOTE: Resistance will vary slightly with temperature.



## Controller Light Bulb Replacement

1. Remove the courtesy light controller.
2. Turn the socket 45° counterclockwise to remove it.

